

43 Roundwood Road, Northenden, Manchester, M22 4AU



**JP&Brimelow**  
ESTATE AGENTS



# Offers In The Region Of £350,000

 3  1  2  D

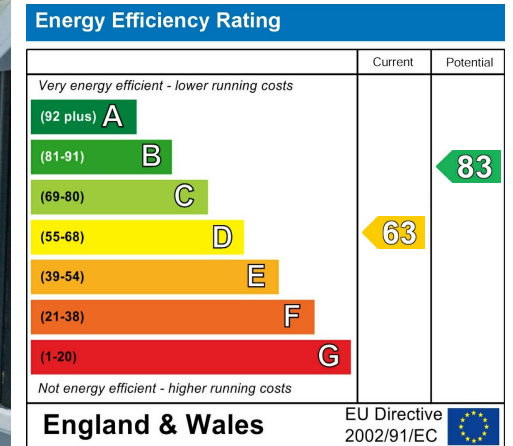
\*\*\*VIDEO TOUR AVAILABLE\*\*\* An immaculately presented & modernised THREE BEDROOMED bay fronted semi-detached property located on a leafy road off Longley Lane here in Northenden. Within just a short walk to all the independent shops/bars/restaurants and schools on Palatine Road. Situated close by to fantastic transport links giving direct access into Manchester City Centre. The well-planned accommodation comprises; A porch, an entrance hall, a lounge with bay window to the front aspect, a dining room with views into the rear garden and a fitted kitchen with access out into the generous lawned rear garden. To the first floor a landing reveals three good sized bedrooms and a modern white three-piece bathroom completes this lovely home. The property benefits from gas fired central heating, a good sized private rear enclosed garden, a large driveway and a detached garage which provides further secure storage. Ideal for a professional couple or young family due to the location and space available.





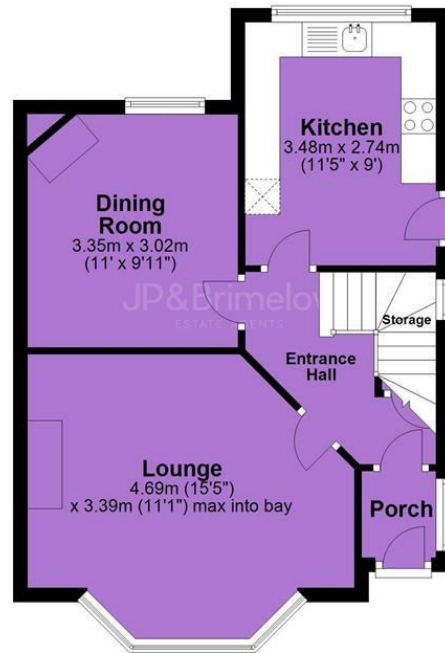


## EPC Chart

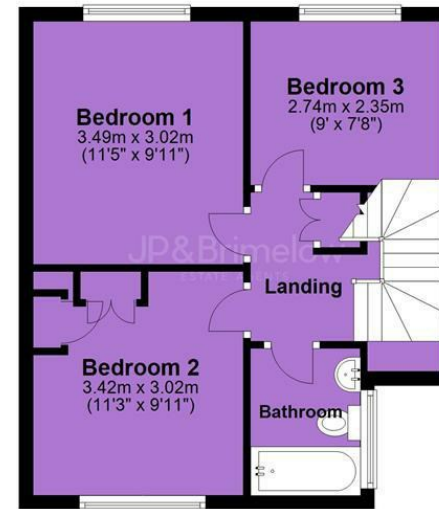


Tenure: **Leasehold** Council Tax Band: **C**

## Ground Floor



## First Floor



JP & Brimelow Estate Agents Ltd  
 430 Barlow Moor Road, Manchester, M21 8AD  
 Tel: 0161 8822233  
 E: sales@jpbrimelow.co.uk www.jpandbrimelow.co.uk



**JP & Brimelow**  
 ESTATE AGENTS

NOTICE: JP & Brimelow Estate Agents Ltd for themselves and for the vendors or lessors of this property whose agents they are give notice that:

- (i) the particulars are set out as a general outline only for the guidance of intending purchasers or lessees, and do not constitute, nor constitute part of, an offer or contract;
- (ii) all descriptions, dimensions, references to the condition and necessary permissions for use and occupation, and other details are given in good faith and are believed to be correct but any intending purchasers or tenants should not rely on them as statements or representations of fact but must satisfy themselves by inspection or otherwise as to the correctness of each of them;
- (iii) no person in the employment of JP & Brimelow Estate Agents Ltd has any authority to make or give any representation or warranty whatever in relation to this property.

jpandbrimelowestateagents

@jpandbrimelow